

# EVERY DAY COUNTS!

## Our target is a minimum of 96% attendance.

Attending school everyday and on time will help give your child the best possible start in life.

Going to school every day means:

- ☐ learning new skills
- ☐ making friends
- ☐ having lots of fun
- ☐ building lasting relationships
- ☐ taking part in exciting activities

## ENSURE YOU GIVE YOUR CHILD THE BEST CHANCE

<p><b>190 days</b> school attendance = 100%</p> <p><b>180 days</b> school attendance = 95%</p> <p><b>YOU ARE GIVING YOUR CHILD THE BEST CHANCE OF SUCCESS.</b></p> <p><b>TOP MARKS!</b></p>	<p><b>171 days</b> school attendance = 90%</p> <p><b>161 days</b> school attendance = 85%</p> <p><b>PROGRESS AT SCHOOL IS BEING AFFECTED.</b></p> <p><b>SLIPPING BACK!</b></p>	<p><b>152 days</b> school attendance = 80%</p> <p><b>143 days</b> school attendance = 75%</p> <p><b>YOU ARE NOT GIVING YOUR CHILD A FAIR CHANCE. SERIOUS CONCERNS !</b></p>
---	--	---

HIGH EXPECTATIONS LEAD TO HIGH ACHIEVERS

# Late attendance



Our classrooms are open to all children from **8.35am** with morning activities.

Children who arrive late **disrupt lessons**, which can be embarrassing for the child and can in turn, encourage absence. It is also extremely **disruptive for the rest of their class**.

## Do you know how much learning children miss out on?

Minutes late per day	Equals to (per academic year)
5 minutes	3.4 days
10 minutes	6.9 days
15 minutes	10.3 days
20 minutes	13.8 days
30 minutes	20.7 days

HIGH EXPECTATIONS LEAD TO HIGH ACHIEVERS

# Illness absence



Do I need to keep my child off school?

<b>Impetigo</b> Until lesions are crusted & healed or 48 hours after commencing antibiotics	<b>Whooping Cough</b> 48 hours after commencing antibiotics	
<b>Hand, foot &amp; mouth</b> No need to stay off but school or nursery should be informed	<b>Slapped Cheek</b> No need to stay off but school or nursery should be informed	<b>Tonsillitis</b> No need to stay off but school or nursery should be informed
<b>Glandular Fever</b> No need to stay off but school or nursery should be informed	<b>Scarlet Fever</b> 24 hours after commencing antibiotics	<b>Threadworms</b> No need to stay off but school or nursery should be informed
<b>Diarrhoea &amp; Vomiting</b> 48 hours from last episode	<b>Scabies</b> Until after first treatment	<b>Head Lice</b> No need to stay off but school or nursery should be informed
<b>Conjunctivitis</b> No need to stay off but school or nursery should be informed	<b>Mumps</b> 5 days from onset of swelling	<b>Flu</b> Until recovered
<b>Chicken Pox</b> Until all spots have crusted over	<b>Measles or German Measles</b> 4 days from onset of rash	

## Reporting Absence

Please notify the school **before 8.50am** by emailing **absence@kingspark-academy.co.uk** or calling **01202 395138** (Option 1 – Absence Line) leaving your child's name, their class, along with the reason for absence (please give us a full reason other than 'unwell').

**Parents must make contact EVERYDAY that their child is absent.**

HIGH EXPECTATIONS LEAD TO HIGH ACHIEVERS

# Vomiting or diarrhoea

It is usually easy to tell whether your child is suffering from an isolated incident of sickness or if they might have sickness bug. Please observe your child. If you feel they do not have a stomach bug, and it was an isolated incident, they can come to school.

# Medications

Please come to the school office to complete a consent slip and the first aider will be able to administer medication to your child (**prescribed only**).

Antibiotics that need to be given 3 times per day should be spaced out so that they are taken when at home. However, school can give antibiotics that need to be taken 4 times a day, once during the school day.

# Medical appointments

Please make medical and dental appointments outside of school hours wherever possible.

Children will be expected to attend school before and after any appointments. Only half days will be authorised unless a full day is necessary.

You **MUST** provide the school office with a copy of the appointment letter.

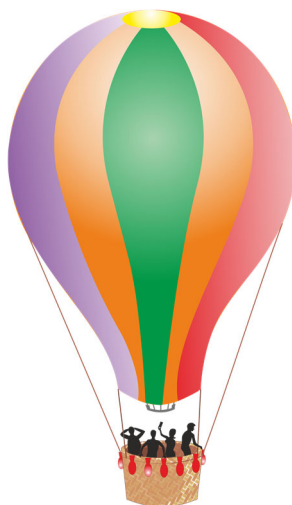
# Holidays / special events

King's Park Academy does not support taking a holiday in term time. Parents are strongly requested to avoid taking holidays in term time. If this is absolutely unavoidable, an 'Absence Request Form' must be completed. The completed form should be received **at least a week** before the period for which you are seeking authorisation. The completed form setting out your reasons must be returned to the front office.

**PLEASE THINK CAREFULLY BEFORE  
TAKING YOUR CHILD OUT OF SCHOOL  
DURING TERM TIME**

Any unauthorised absence may result in a Penalty Notice.

If your child misses...	that equals...	which is...
1 day a fortnight	20 days per year	4 weeks per year
1 day a week	40 days per year	8 weeks per year
2 days a week	80 days per year	16 weeks per year
3 days a week	120 days per year	24 weeks per year



LET'S KEEP  
YOUR  
CHILD'S  
CHANCES OF  
SUCCESS  
FROM  
FLOATING  
OFF INTO  
THIN AIR



**KING'S PARK  
ACADEMY**

High Expectations Lead to High Achievers

**ATTENDANCE  
INFORMATION**

***"Education is the  
most powerful  
weapon that you  
can use to change  
the world"***

**- Nelson Mandela**